



# Friends of Nepal

Email: [friendsofnepal@ozemail.com.au](mailto:friendsofnepal@ozemail.com.au)

Web: [www.friendsofnepal.com.au](http://www.friendsofnepal.com.au)

## NEWSLETTER #7 APRIL 2016

### Sponsorship Program Update.

We now have a total of 58 sponsors! Children sponsored include all those currently living at the Orphanage, local children & older children who have left the Orphanage to complete further study.

Since the departure of Bhim, our former manager, we have faced considerable challenges in communicating in English with Orphanage management. We have been unable to follow up on the progress of either the school or the children. We have been working on ways to solve this problem for the past 3 months, but have not yet been successful in identifying a person suitable for taking over Bhim's role. We need someone with sufficient English & accounting skills, to successfully manage the program, financially & educationally, for us. We have delayed sending out accounts during this period while we searched for a solution. Expect them soon, however! We have a plan!



### Good News.

In late April, committee member, **Ainsley Roscrow**, will visit Nepal & the Orphanage for 2 weeks. During this time she will work closely with **Samjana Pokharel**, a respected high school principal & current Assistant Rotary Governor, & with Orphanage & school management, to explore ways of managing the sponsorship program in Nepal. They will focus on finding a way of providing feedback to us in the form of letters, progress & quarterly financial reports. Committee member **Lynne Rawson**, will monitor the progress when she visits mid year.

**Ainsley** will carry letters only to your sponsored child. They will have to be delivered by April 20<sup>th</sup> to 23 Centre Way, Belair. You can also give them to Denise at the Movie night. No gifts or money please! Ainsley does not have an excess baggage allocation to date!



We are very fortunate that both Ainsley & Lynne have established such strong links with the Orphanage & Rotary community, & can act on our behalf to achieve the best outcomes for the children.

### Other changes.

There are significant changes proposed for education in Nepal. The DRRMIS school will be a kindergarten to year 7 school only. The older children have to attend a local public school to complete Years 7-10 & then 1 +2. These last 2 years are College & not all children go on to complete them. Generally children aged over 16 years have to live in hostels to attend these schools, but we are not yet entirely clear about the status of this requirement, as this rule appears to have been relaxed after the chaos of the earthquake. Another task for Ainsley!

Fees for Year 7-12 are considerably higher than those for the DRRMIS & our current sponsorship fee of \$300. Hence, we are now seeking multiple &/or corporate sponsors for each of the older children. In the past we have had individual sponsors & supplemented this support with our fundraising efforts.

DRRMIS sponsorships will remain primarily focused on the education, rather than the care, of the children. Sponsorship money will be pooled & spent on general educational items like school resources, playground equipment etc. as well as the individual needs of the children. Ainsley & Lynne will do their best to collect letters for sponsors while they are there.



Proud Supporters Of DRRMIS & Education for Youth of Nepal  
(RAWCS) Project 25-2012-13 Donations are tax deductible





# Friends of Nepal

Email: [friendsofnepal@ozemail.com.au](mailto:friendsofnepal@ozemail.com.au)

Web: [www.friendsofnepal.com.au](http://www.friendsofnepal.com.au)

Sponsorship money will not be transferred directly to Nepal until we have a new business manager in place. Instead it will be taken to Nepal by our committee members, who will direct spending towards identified needs of the children & school resources, in collaboration with management. We are fortunate to have members visiting 3 times this year so the children get consistent support & we can do this successfully! Where possible, money will be transferred directly to training institutions to cover fees, minimising money transfer costs.

All sponsorship & other donations currently have tax deductibility through our connection with the RAWCS program. As we realize that this is a finite program, we are investigating charity registration status for our small group. Accountability, credibility & transparency are very important to us!

## Youth Development Program

There is a great need to implement a sustainable transition Youth Development Program to support the older children who leave the Orphanage, to attend Years 7-10, college, university &/or vocational training. Over the next 2 years at least 12 children will need this support, if they are to make a successful transition to independent adult life. We have been working on the Youth Development program for the past 6 months & have enlisted the support & advice of our former manager Bhim Kumar to help us achieve this dream.

This is an important project to which we have already made a significant commitment. We currently support 2 young men at Softwarica IT college with fees & living costs. We do not want to offer hope & support to these disadvantaged young people & not be able to sustain it, so we are currently searching for corporate sponsorships which are related to the students chosen field of study. This will provide an extra layer of support for these young adults. We continue to work closely with Friends of Pulteney & Malcolm Lindquist on this project. If you can help, or know anyone who might be interested, please contact us at once!

During her visit Ainsley will meet with Bhim to identify & cost suitable premises where several of the older boys could live & be supported by a trusted, adult mentor. These young people are not used to making decisions, managing money, or even owning possessions, so we think a mentor is very important. Supporting the girls is more challenging & Ainsley will also investigate suitable arrangements, like women's hostels, for them. Lynne will follow up when she goes mid-year.



**Getting to know Manju, aged 17**, who wants to be a lawyer. She comes from a severely disadvantaged family who were unable to provide for her, & has been living at the Orphanage for the past 8 years. She is now completing her final Year 12 exams & wants to study a combined arts & law degree at Kathmandu School of Law. Manju will need to live in a women's hostel close to the University. We would love to support Manju & estimate it will be a minimum of \$3,000 per year for a 5 year program. This is a big commitment, but one we hope we can make for Manju. She is an outstanding student & young woman. Manju plans to use her degree to empower women in Nepal.

**Fundraisers.** Our 2016 fundraising efforts will be directed to the Youth Development Fund.



Our next fundraiser is our **Movie Night** at Mitcham Cinemas. The movie is "Sherpa- Trouble on Everest" & is highly recommended. Information is attached to this newsletter & we hope to see you there. Great raffle prizes on offer!

We also have bags of **Riverland Butternut Pumpkins** available for \$10 per bag or \$1.00 or \$2.00 per pumpkin depending on size. Contact Denise 0414358106 if you want some! Be quick, they go fast!



**Proud Supporters Of DRRMIS & Education for Youth of Nepal  
(RAWCS) Project 25-2012-13 Donations are tax deductible**



# Friends of Nepal

Email: [friendsofnepal@ozemail.com.au](mailto:friendsofnepal@ozemail.com.au)

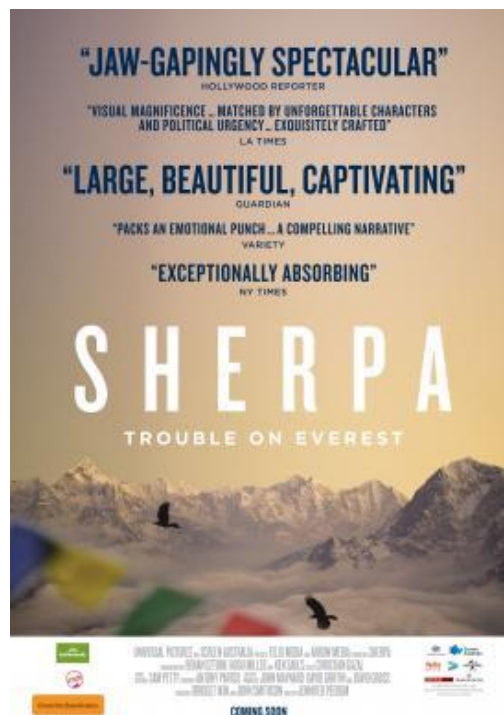
Web: [www.friendsofnepal.com.au](http://www.friendsofnepal.com.au)

**Join Us For The Most Spectacular Movie Of The Year!**

**Discover The Untold Story Of The Sherpa!**

**Thursday April 14 2016 @ 7.30 for 8.15 start.**

Mitcham Wallis Cinemas Level 1, Mitcham Shopping Centre, 119 Belair Road, Torrens Park



Inspired by the worst tragedy in the history of Everest. SHERPA tells the story of how, in the face of fierce opposition, the Sherpas united in grief and anger to reclaim the mountain they call Chomolungma. Rated M - mature themes & coarse language

**Tickets \$25 adult. \$15.00 child. (under 15 years)**

**Adult ticket includes 3 raffle tickets – Great prizes on offer!**

Book tickets through trybooking <https://www.trybooking.com/LAAF> OR  
<https://www.trybooking.com/193341> or contact Denise at [friendsofnepal@ozemail.com.au](mailto:friendsofnepal@ozemail.com.au)

**ALL Proceeds Support Our Youth Development Program.**



Proud Supporters Of DRRMIS & Education for Youth of Nepal  
(RAWCS) Project 25-2012-13 Donations are tax deductible

